



Disability Services Commission

## Eligible people with disability moving from NDIA to WA NDIS or Local Coordination

Fact sheet for disability sector organisations

### Introduction

On 1 July 2014, Western Australia began a trial of the National Disability Insurance Scheme (NDIS). In WA we are trialling two separate NDIS models – one run by the State and the other by the Commonwealth government.

The State Government's model, the Western Australian National Disability Insurance Scheme (WA NDIS), commenced in the Lower South West on 1 July 2014 and Cockburn Kwinana joined the trial on 1 July 2015. During this same period the Commonwealth Government have been running their National Disability Insurance Agency (NDIA) NDIS model in the Perth Hills area.


The State and Commonwealth governments have agreed that both existing trials are to be extended for 12-months, until 30 June 2017. Further, the trials will be expanded into nine new local government areas.

From 1 October 2016, the WA NDIS will be expanded to include people in the local government areas of Armadale, Murray and Serpentine-Jarrahdale. The Commonwealth's NDIA NDIS will be expanded into Bayswater, Bassendean, Toodyay, York, Chittering and Northam from 1 January 2017.

The different approaches are being independently evaluated over the trial period. The outcome of this evaluation will be used to further develop disability services in WA into the future.

People with disability who are participating in the NDIS trials have the right to choose to move between the trial areas and to also move to other areas of WA and/or interstate.

This fact sheet summarises the procedures that have been agreed between the Disability Services Commission (the Commission) and the NDIA for people with disability who



move out of the WA NDIS and NDIA NDIS trial sites to other areas of the State, including into WA NDIS areas.

## **Key messages**

The procedures aim to ensure that the transition of support from the trial area is managed flexibly and seamlessly, and that people with disability receiving disability support services who move between trial sites will not be disadvantaged as a result of their move.

All Commission staff, including Local Coordinators will work collaboratively with the relevant NDIA and disability sector staff.


The NDIA will continue to provide the person with funding as per the person's existing NDIS plan for a 12-month period.

At the conclusion of the 12-month period, the Commission will ensure continuity of support by developing and approving funding for a new plan based on the person's reasonable and necessary support needs in their new location.

The transfer of a person's plan and their reasonable and necessary funding and supports will be managed by the NDIA Planner and the Local Coordinator in the destination locality.

## **How will it work?**

1. An eligible person with disability will contact NDIA, complete the NDIA's moving registration form and provide consent for this information to be provided to the Commission.
2. The person will be connected to a Local Coordinator in their new location and their eligibility will be confirmed.
3. Should the person wish to retain supports with their current disability sector organisation, supports will continue until the plan is due for review.
4. After review, a new plan will be developed with funding for reasonable and necessary supports identified.
5. Where the plan identifies that a change in management of plan funding is required (eg. a transfer from self-management to organisation management), the processes relevant to the destination locality apply (WA NDIS or Local Coordination).



Additional guidance on the process can be found at Appendix 1.

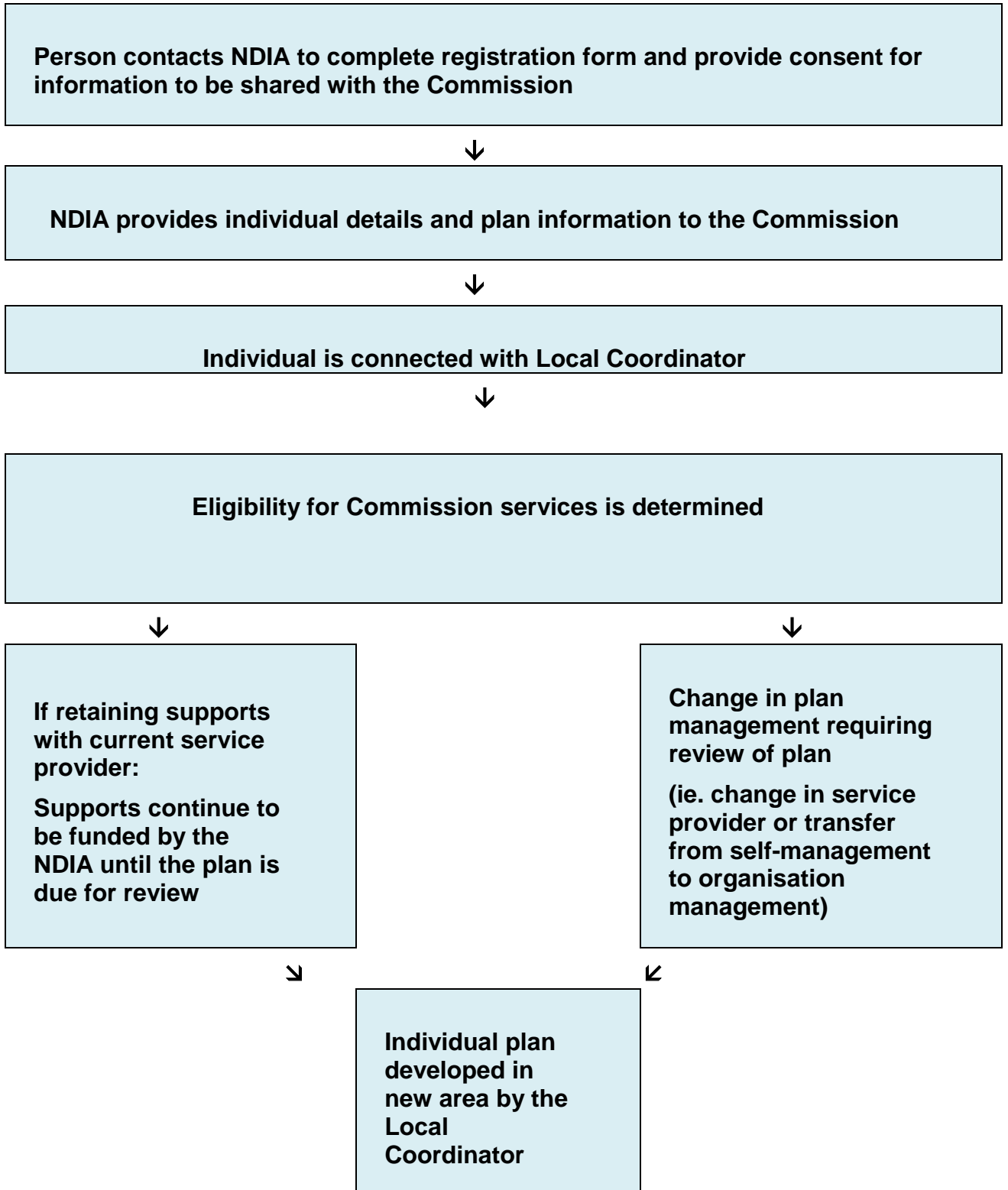
### **Further information**

Refer to the Commission's WA NDIS Operational Policies for further information. This can be accessed through the Commission's [website](#).

Please contact [Admin\\_LAC@dsc.wa.gov.au](mailto:Admin_LAC@dsc.wa.gov.au) if you have any further questions about the process for eligible people with disability moving from NDIA to WA NDIS or Local Coordination.

Individuals and families seeking further information on moving from the NDIA trial site should be directed to their NDIA planner in the first instance.

## Appendix 1





**Individual plan  
supports  
commence**

**Note:**

For individuals transferring to Local Area Coordination or WA NDIS My Way, NDIA will transfer 12 months of funding to the Commission. This is in line with the Intergovernmental Agreement for the National Disability Insurance Scheme (NDIS) Launch, Annex C: Portability Arrangements.